



EN
WORKBOOK
23-24

www.stagunt.fr



WORKBOOK 2023-24



We conceive hunting as a sport for enthusiasts.

Freedom of practice, innovations, tests, field validations while respecting our natural environment.

For 10 years we have been committed to offering technical, functional and affordable hunting clothing.

We design versatile and accessible clothing whatever your hunting style, whether you are a seasoned hunter or a novice, and we pay attention to every detail.

With our technical experience, designed and developed with teams of enthusiasts, STAGUNT clothing meets optimal conditions of performance, comfort and reliability with a sporty look and innovative products.

We collaborate with guides, hunters, stalkers and woodcockers in order to develop and test our products in different territories, in different climatic conditions and in the face of sometimes hostile nature.

Because with the right equipment you will live more beautiful hunting experiences, we are happy to present you our collection.

RANGE

TRAQUE



HARDTRACK JKT

SG250 FROM S TO 4XL

Rugged track jacket. Clever combination of 4 materials at strategic locations to ensure comfort and robustness.

Front: Material super syrong 1200 deniers / KVL reinforcements shoulders and front arms/ 5 large zipped pockets/ Ergonomic sleeves.

Back: Soft material. Large back pocket

Inside: Large secure zipped pocket/ Lightweight mesh lining for breathability.

COMPONENTS

Outside 1: 1200D - 100% Nylon Rip stop
Outside 2: 900D - 100% Nylon Rip stop
Outside 3: 900D - 100% Nylon BB Rip stop
Reinforcements:
KVL 36% Polyamide
48% Polyester
16% Elasthanne
Lining: 100% Polyester



SG250/012 - BLAZE UNI



SG189/012 - BLAZE UNI



SG189/055 - CYPRESS

WILDTRACK PANT

SG189 FROM 38 TO 54

Waterproof, strong & active tracking pant with ergonomic fitting.

Front: Half elasticated comfortable waist / 2 hands pockets / Ventilation zippers / Reinforced front leg with KVL / Bottom inleg reinforcement.

Back: 900D rip stop strong fabric.

COMPONENTS

Outside 1: 900D - 100%Polyester Rip stop
Outside 2: Soft Shell Polyester, membrane
100% polyuréthane
Reinforcements:
KVL 36% Polyamide
48% Polyester
16% Elasthanne
Lining: 100% Polyester



ALFATRACK

SG271 FROM S TO 4XL

Active Sturdy jacket dedicated to tracking at the beginning of the season. Lightweight, active and cleverly designed to be compatible with many dog geolocalisation system.

Breathable, water repellent and windproof jacket with a 1200D fabric.

Front: Ergonomic and protective collar/ KVL Shoulders and forearms reinforcements/Two large chest pocket with a curved zip opening to ensure the central remote antenna/ Two hands pockets/ Adjustable cuffs

Back: Double entry large zipped back pocket.

Inside: Honeycomb fabric to ensure breathability/ Dedicated pocket for wristband/ Secured waterproof pocket for mobile/ Two extra-large tote pocket both sides.

COMPONENTS

Outside 1: 100% Polyester
Outside 2: 100% Polyester
Outside 3: 48% Polyester, 36% Nylon, 16% Spandex



SG271/012 - BLAZE UNI



HARDTRACK PANT

SG236 FROM S TO 4XL

Sturdy tracker pants. Designed for tough situations, it will give you a perfect protection thanks to a 1200D rip stop fabric combined with KVL on the front of the leg. Elasticated waistband and removable straps for a better comfort.

Fabric: 1200 deniers anti bramble

Front: Adjustable removable straps / Elasticated comfort belt / Easy access pockets/ Knee reinforcements.

COMPONENTS

Extérieur : Nylon 900 &1200D

Reinforcements: KVL

Lining: 100% Polyester



SG236/012- BLAZE UNI



SG236/055- CYPRESS



LAMOTTE 2

SG237 FROM S TO 4XL

Hunting pant with suspenders

Fabric: 600 Deniers Rip stop, waterproof

Front: Easy access hand pockets / Fully elasticated adjustable waist / Shaped knees.

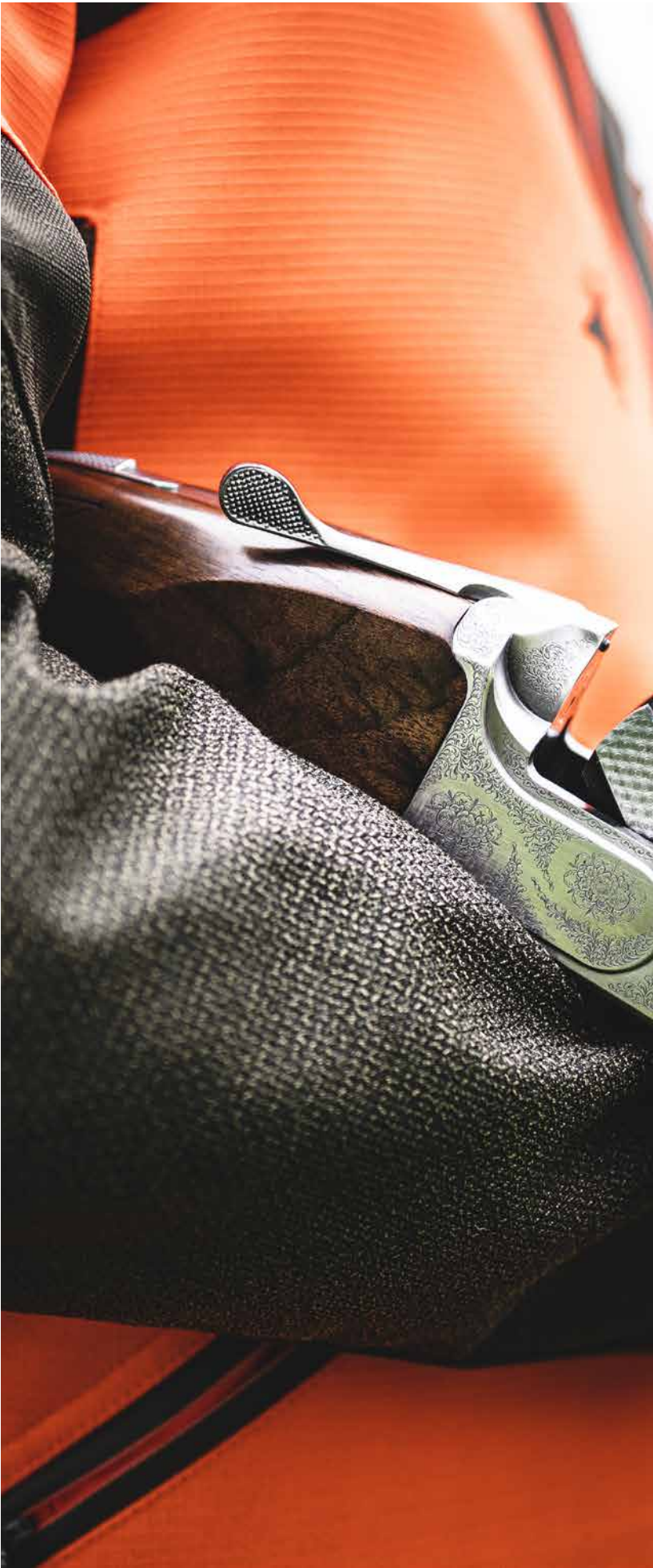
COMPONENTS

Extérieur : 100% Nylon

Lining: 100% Polyester



SG237/055- CYPRESS





SG304/012 - BLAZE UNI



NEW PROLIGHT TRACK JKT

SG304 FROM S TO 4XL

Light weight jacket designed for early season hunting. Combining 3 materials allowing strenght and breathability, it's an active jkt with a sporty look with large chest pockets adapted to fit your dog tracking system.

Breathable, water-repellent jacket with strong abrasion resistance fabric on the front & back

Front: Medium high collar/ Upper body reinforcements and KVL forearms/ Two large zipped chest pockets for remote controller/ Two hand pockets/ Adjustable wrists

Back: Ventilation on the upper back/ Large zipped back pocket with double entrance.

Inside: Lightweight lining for breathability / A securde mobile pocket/ Two large extra pockets on each side.

COMPONENTS

Outside 1: 100%Polyester
Outside 2: 94% Polyester - 6% Spandex
Outside 3: 48% Polyester - 36% Nylon -16% Spandex
Lining: 100% Polyester



SG297/055 - CYPRESS

SG297/019 - ANTHRACITE

NEW PROLIGHT TRACK PANT

SG297 FROM 38 TO 50

Maximum comfort for these reinforced bi-stretch pants. Sporty cut, fitted legs and preformed knees, this model has 3 secure pockets.

Front: Half elasticated belt / Zipped hand rest pockets / Thigh zipped pocket / KVL lower leg reinforcement.

Back: 2 zipped pockets / preformed knees.

COMPONENTS

Outside 1: 92% Polyamide - 8% Élasthanne
Outside 2: 92% Polyester - 8% Elasthanne
Lining: 100% Polyester



PROLIGHT TRACK VEST NEW

SG305 FROM S TO 4XL

Light weight vest designed for early season hunting.. it's an active vest with a sporty look combining 3 fabrics to ensure strenth & breathability. It's a very convinient vest with 2 large chest pockets adapted to fit your dog tracking system, and others essentials secured pockets.

Front: Upper body reinforcements and KVL forearms/ Two large zipped chest pockets for remote controller / Two rest hands pockets .

Back: Ventilation on the upper back / Large zipped pocket with double entrance.

Inside: Secured pocket for mobile/ Two additional large tote pockets on each sides.

COMPONENTS

Outside 1: 100% Polyester
Outside 2: 94% Polyester - 6% Spandex
Outside 3: 48% Polyester - 36% Nylon - 16% Spandex
Lining: 100% Polyester



SG305/012- BLAZE UNI



TRACKEASY PANT

SG272 FROM 38 TO 54

Lightweight and stretch active tracker pants dedicated to the beginning of the season. Active fit with front and back rip stop reinforcements.

Front: Half-elasticated waistband/ Hand-rested pockets/ Cargo pockets/ Rip Stop reinforcements from thighs to lower legs.

Back: Trouser top and lower leg reinforcements.

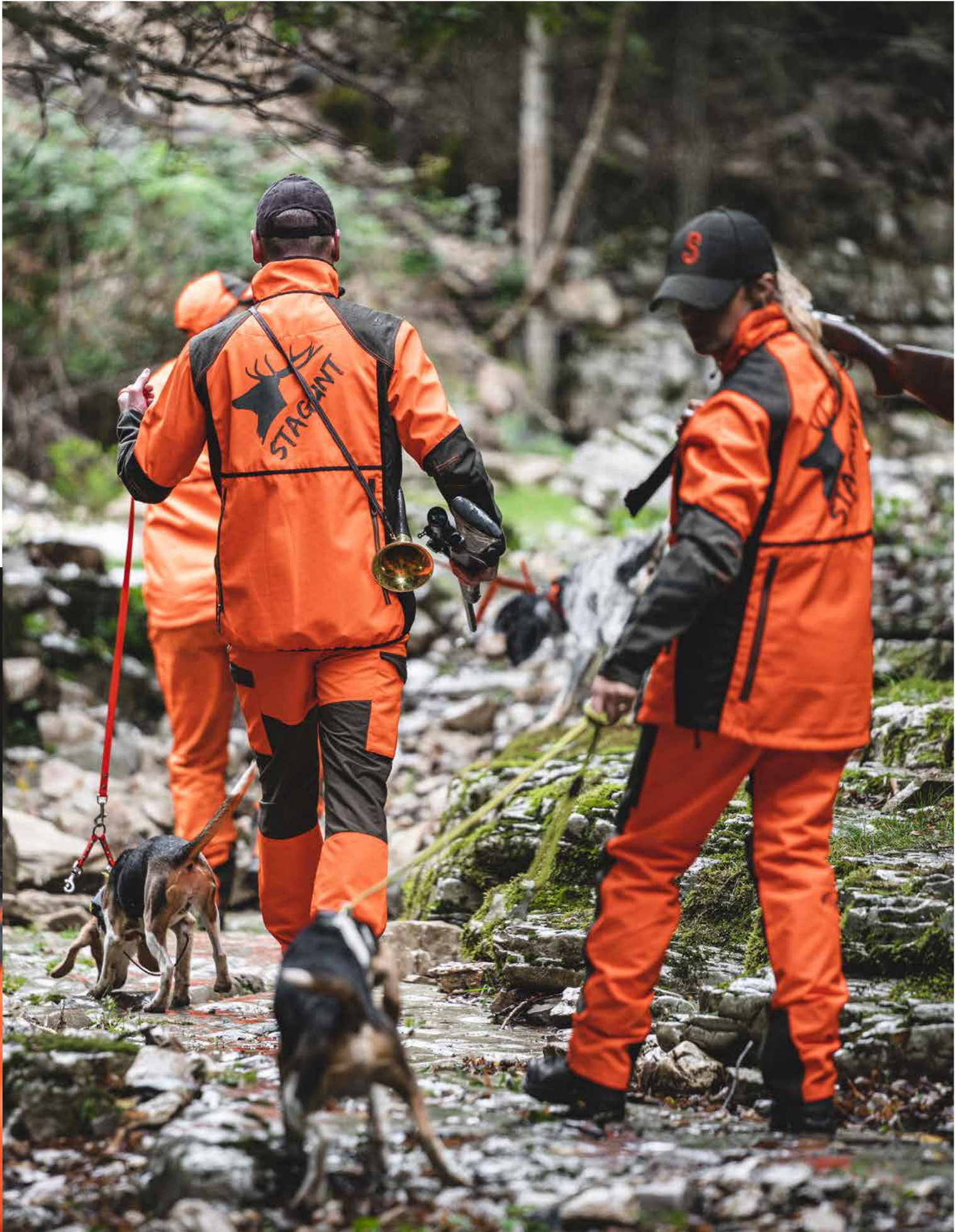
COMPONENTS

Outside 1: 70% Nylon - 30% Polyester
Outside 2: 100% Polyester
Lining: 100% Polyester



SG272/012 - BLAZE UNI

SG272/010 - BRONZE



ACTIVE RANGE

COLD & WET WEATHER



NORTHGAME JKT

SG308 FROM S TO 4XL

Hybrid winter jacket waterproof and padded as a puffy jacket inside. Not noisy and very soft with a sophisticated herrinbone fabric. As comfortable on the field as after hunting, thanks to a removable blaze vest cleverly hidden into back pocket. At least 8 pockets at front for this winter style.

Material: Silent herringbone fabris / all seams waterproof / waterproof & breathable membrane 10,000 /10,000

Front: Removable and adjustable padded hood / Large volume zipped chest pockets / Warm hand rest pockets / Double entry low pockets, protective flap / Integrated cartridges holder / Velcro adjustable cuffs / Protective lyvra cuff / Adjustable jacket bottom.

Back: Wide back pocket / 3-point opening.

Interior: Puffy effect padding on the inside.

COMPONENTS

Outside 1: 100% Polyester
Outside 2: 100% Polyester
Outside 3: 100% Polyester
Lining: 100% Polyester



SG249/022 - BISON



SG308/022 - BISON

NORTHGAME PANT

SG310 FROM 38 TO 54

Waterproof soft trousers with its non-noisy herringbone fabric, removable leather straps, protective back and suede finishes.

Front: Removable and adjustable shoulder straps / Hands pockets / 1 cargo pocket / 1 zipped thigh pocket / Preformed knees.

Back: back protective belt / 2 back pockets

Inside: Comfortable and warm brushed lining upper pants.

COMPONENTS

Outside 1: 100% Polyester
Outside 2: 100% Polyester
Lining: 100% Polyester



SG310/022 - BISON

GAME2 VEST

SG292 FROM S TO 4XL

A woolly tweed material combined with suede details make this vest elegant, while providing thermal insulation with its interior with neat and quilted finishes.

Front: Kilted suede shoulder yokes / check woollen fabric / 2 zipped hands pockets.

Inside: Quilted lining

COMPONENTS

Fabric 1: 50% Wool - 50% Polyester
Fabric 2: 55% Polyester - 10% Nylon - 35% Coton
Lining: 100% Polyester



GAME INSULATED JKT

SG281 FROM S TO 4XL

Big Game jacket, durable and refined at the same time, this jkt is functional thanks to many pockets.

Front: Removable hood/ Chest pockets/ Hight Hand pockets/ Large patched gusset pockets.

Back: breath pleats for comfort/ Large back pocket

Inside: Removable vest in elegant woolblend, allowing to use the heating system.

COMPONENTS

Outside 1: 100% Polyester
Outside 2: 55% Polyester 10% Nylon 35% Coton
Inside 1: 50% Laine 50% Polyester
Inside 2: 55% Polyester 10% Nylon 35% Coton
Lining: 100% Polyester



SG281/BC- BLAZE CAMO

TEVA2

SG290 DU S AU 3XL

Trendy, light & packable puffa vest

Fabric: Very light / DWR / Wind breaker/ insulation with high feel power

Front: zipped hands pockets / Armhole finishing with binding / Bottom adjustment capability.

Inside: Wide storage pockets

COMPONENTS

External: 100% Polyester, Traitement DWR
Lining: 100% Polyester
Filling: Ouate 100%



SG290/028 - BARK



SG290/046 - PUMPKIN



SG290/010 - BRONZE



SG290/041- NAVY

GAME PANT

SG239 FROM 38 TO 54

Warm, waterproof, strong and neat trousers thanks to its many details such as its removable straps, high back and its suede finishes.

Front: Removable and adjustable straps / Hand pockets / 2 cargo pockets/ 1 zipped thigh pocket / Preformed knees.

Back: Ergonomic high belt

Inside: Warm lining on the top of the pants.

COMPONENTS

Outside 1: 100% Polyester
Outside 2: 55% Polyester - 10% Nylon - 35% Coton
Lining: 100% Polyester



SG239/022 - BISON

ALASKAN JKT

SG264 FROM S TO 4XL

Reversible versatile water repellent puffy jacket with an orange Blaze side and a plain Country side.

Blaze Orange side: Protective collar and removable hood/ One zipped chest pocket/ Two zipped hands pocket/ Elastic binding at cuffs and bottom.

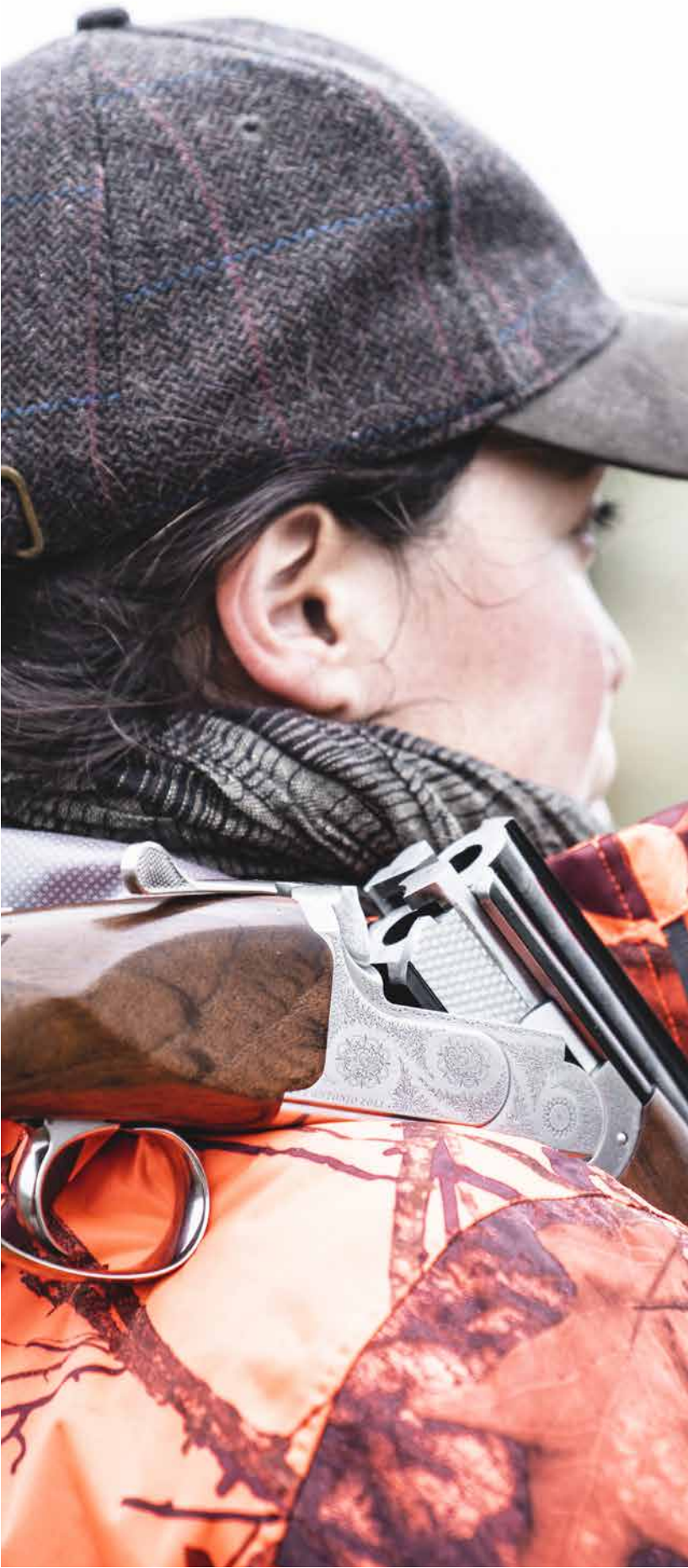
Country face: Bi material with nice details/ Chest pocket/ Two hand-rested pockets.

COMPONENTS

Fabric 1: 100% Polyester
Fabric 2: 100% Nylon
Fabric 3: 100% Polyester
Insulation: 100% Polyester



SG264/BC - BLAZE CAMO



SNIPE JKT

NEW

SG303 FROM S TO 2XL

Bi-stretch jacket, light & waterproof. This sporty jkt, with a fitted fit, cleverly combines 3 fabrics to ensure robustness, easy movements and protection. Clever with many pockets, including 2 large zipped chest pockets dedicated to dog geolocation equipments, this jacket will be appreciated by small game hunting lovers.

Front: Ergonomic collar / Upper body and forearm reinforcements KVL/ Two large deep zipped chest pockets / Two rest hands pocket / 2 horizontal zipped pockets / 2 pathed pockets under flap / Adjustable cuffs

Back: Back pocket with wide gusset

Inside: Lightweight lining for easy breathability/ A secure mobile pocket/ Two additional large tote pockets on each side

COMPONENTS

Outside 1: 92% Polyamide - 8% Elasthanne / Membrane 20000 / 20000

Outside 2: 92% Polyester - 8% Elasthanne / Membrane 20000 / 20000

Lining: 100% Polyester



SG303/010 - BRONZE



SG303/012 - BLAZE UNI



SG296/010 - BRONZE

SNIPE PANT

SG296 DU 38 AU 52

Versatile waterproof pants, light perfect for small game hunting. Zipped hand and thigh pockets Reinforced at front legs and buttocks, while maintaining incredible comfort thanks to its bi stretch fabric.

COMPONENTS

Outside 1: 92% Polyamide - 8% Elasthanne / Membrane 20000 / 20000

Outside 2: 92% Polyester - 8% Elasthanne / Membrane 20000 / 20000

Lining: 100% Polyester



SNIPE VEST

NEW

SG298 FROM S TO 2XL

Sporty bi-stretch vest. An active fit which cleverly combines 3 fabrics to ensure robustness, easy movements and protection. Clever with many pockets, including 2 large zipped chest pockets dedicated to dog geolocation equipments, this vest will be appreciated by small game hunting lovers.

Front: Upper body and forearm reinforcements KVL/ Two large deep zipped chest pockets / Two rest hands pocket / 2 horizontal zipped pockets / 2 pathed pockets under flap.

Back: 2 sides opening back pocket with wide gusset

Inside: Lightweight lining for easy breathability/ A secure mobile pocket/ Two additional large tote pockets on each side

COMPONENTS

Outside 1: 92% Polyamide - 8% Elasthanne

Outside 2: 92% Polyester - 8% Elasthanne

Lining: 100% Polyester



SG298/010 - BRONZE





SG286/FBC - FIRE BLAZE CAMO00



SG286/WDC - WOODS CAMO00



TERRA JKT

SG286 DU S AU 3XL

This versatile and noiseless waterproof hunting jacket with a sporty look is suitable for all seasons.

Fabric: membraned, brushed fabric, resistant and not noiseless

Front: Removable hood/ kvl shoulder reinforcements/ Ziped vertical chest pocket/ 2 hand-rested pockets with waterproof zippers/ 2 patched, maxi storage pockets, with flaps/ adjustable cuffs

Back: Camier pocket Double access

Inside: Light brushed lining/ zipped inside pocket/ inner lycra cuff

COMPONENTS

Extérieur : 100% Polyester Micro Brush 10K / 10K
Cagoule : 90% Polyester - 10% Spandex
Lining: 100% Polyester



SG282/WDC - WOODS CAMO00

TERRA PANT

SG282 DU 38 AU 52

Versatile noiseless active pants with cargo pockets.

Fabric: Membrane, soft, resistant and noiseless

Front: Side elasticated comfort waist/ Hand rest pockets/ Cargo pockets with zip and flap/ Preformed knee.

Back: High waistband

Fully mesh lined.

COMPONENTS

Extérieur : 100% Polyester Micro Brush 10K / 10K
Cagoule : 90% Polyester - 10% Spandex
Lining: 100% Polyester



TERRA MID

SG295 FROM S TO 4XL

A hybrid construction vest combining insulation in the front & freedom of movement fabric.

Fabric: Light DWR & Wind breaker nylon fabric in front /synthetic insulation /knitted heather stretch fabric with micro grid brush backing at back.

Front: Active look / Insulation at front body / protective collar / 2 hands pocket with zipper / Elastic binding finishing at armholes.

COMPONENTS

Lining: 100% Polyester
Filling: Ouate synthétique 100% Polyester



SG295/012 - BLAZE UNI



SG295/028 - BARK



PHOENIX JKT

SG285 DU S-4XL

Multi-pocket versatile jacket that combines technicality and sophisticated look. You'll have a crush thanks to its soft, peach handfeel fabric not noisy. The jacket is waterproof and will be perfect for small game hunting.

Fabric: Noiseless microfiber I waterproof & breathable 10000/10000/ fully seam taped.

Front: Thin retractable hood in collar/ Reinforced and contrasted shoulders/ zipped chest pocket under flap/ 2 zipped hands pockets/ 2 wide patched pockets with double opening / adjustable cuffs

Back: Midle back pleat which allow freedom of movement & Large carnier back Pocket

COMPONENTS

Outside 1: 55% Polyester - 35% Coton - 10% Polyamide / membrane 10000 / 10000
 Outside 2: 100% Polyester micro brush
 Outside 3: 48% Polyester - 36% Nylon - 16% Spandex
 Lining: 100% Polyester



SG285/022 - BISON



SG287/022 - BISON

PHOENIX PANT

SG287 DU 38 AU 52

Waterproof noiseless active pants

Fabric: Noiseless microfiber waterproof 10000/10000 / Fully seam taped

Front: Comfortable half elasticated waistband/ Hand rest pockets/ Cargo pockets with zip and flap/ Preformed knees

Back: Protective comfortable belt

Inside : Taffetas lining.

COMPONENTS

Outside 1: 55% Polyester - 35% Coton - 10% Polyamide / membrane 10000 / 10000
 Outside 2: 100% Polyester suédé
 Lining: 100% Polyester



PHOENIX VEST

SG280 DU S AU 3XL

Multi-pockets vest with a sophisticated look and blaze details

Fabric: Non-noisy microfiber.

Front: Contrasted shoulders/ zipped chest pocket/ 2 large patched pockets with adjustable gussets.

Back: Wide carnier pocket with contrasted gusset.

COMPONENTS

Outside 1: 55% Polyester - 35% Coton - 10% Polyamide
 Outside 2: 100% Polyester micro brush
 Outside 3: 100% Polyester suédé
 Lining: 100% Polyester



SG280/022 - BISON



THUNDER JKT

SG192 FROM S TO 4XL

Active, light & versatile. A regular fit wich brings comfort, easy move thanks to an ergonomic design.

Front: Adjustable fix hood / 1chest pocket / 2 Hnads pockets / Bottom adjustment

Back: 1 bac pocket

COMPONENTS

Extérieur : 100% Polyester - Membrane TPU

Lining: 100% Polyester



SG192/BC - BLAZE CAM00



SG192/GC - GREEN CAM00

SOFT GAME JKT

SG251 FROM S TO 4XL

Stretch active Soft Shell jacket made with windproof and water repellent laminated fabric.

Front: Removable hood and protective collar/ Bonded KVL reinforcements at shoulders/ Two rested hands pockets/Two zipped easy access hands pockets/ Integrated lycra cuffs with adjustable tab/ Adjust able drawstring at bottom hem.

COMPONENTS

Outside 1: Soft Shell - 94% Polyester - 6% Elasthanne

Outside 2: Soft Shell - 94% Polyester - 6% Elasthanne

Outside 3: 100% Polyester

Lining: 100% Polyester



SG251/BC - BLAZE CAM00

ACTISTRETCH PANT

SG194 FROM 38 TO 54

Active stretch soft shell pant

Front: Confortable half elasticated waistband 2 hands pockets / Zipped cargo tight pockets / Bottom leg reinforcement / Shaped knees.

Back: Zipped pocket

COMPONENTS

Outside 1: Soft Shell - 100% Polyester

Outside 2: Soft Shell - 94% Polyester - 6% Elasthanne

Lining: 100% Polyester



SG194/055 - CYPRESS



RANGE

DRY WEATHER



ORSET TEE SS

SG154 FROM S TO 4XL

Light, breathable short sleeve Active T-shirt. Quick dry with a micro-perforated yoke under armhole.

The fitting allows freedom of movement and its flatlock seams avoid friction. Without forgetting ANTI MOSQUITOES treatment.

Fabric: light stretch material with micro-perforated yokes under arm / Organic anti mosquito treatment.

COMPONENTS

Outside: 92% Polyester - 8% Spandex
Underarm yoke: 100% Polyester



SG154/PXG - GREEN PIXEL SG154/PXB- BLAZE PIXEL

ORSET TEE LS

SG153 FROM S TO 4XL

Light, breathable long sleeve Active T-shirt. Quick dry with a micro-perforated yoke under armhole.

The fitting allows freedom of movement and its flatlock seams avoid friction. Without forgetting ANTI MOSQUITOES treatment.

Fabric: light stretch material with micro-perforated yokes under arm / Organic anti mosquito treatment.

COMPONENTS

Outside: 92% Polyester - 8% Spandex
Underarm yoke: 100% Polyester



SG153/PXB - BLAZE PIXEL



SG153/PXG - GREEN PIXEL

VERNON PANT

SG268 FROM 38 TO 54

Fully stretch active pants with a slim cut below knees with an anti-tick treatment.

Front: Half-elasticated waistband/ Hand-rested pockets/ Zipped pocket at right thigh/ Cargo pocket under flap/ KVL inleg reinforcement at bottom.

Back: Preformed knees.

COMPONENTS

Outside 1: 70% Nylon - 30% Polyester
Outside 2: 100% Polyester



SG268/064 - TABAC



DRY WEATHER RANGE - SUMMER WEATHER

FOREZ VEST

SG283 FROM S TO 4XL

A lightweight fabric, KVL reinforcements and a dynamic style for this versatile vest. Suitable at the beginning of the season with its breathable mesh back, it will be appreciated for small game with its big capacity pockets.

Fabric: Polyester Canevas

Front: Contrasted shoulders/ 2 wide storage chest pockets, with curved zips/ 2 easy acces & storage pockets/ 2 patched pockets with flap.

Back: Great breathability with a meshed back/ wide carrier pocket with gusset.

COMPONENTS

Outside 1: 100% Polyester
Outside 2: 100% Polyester mesh
Lining: 100% Polyester



SG283/012 - BLAZE UNI

SG283/010 - BRONZE



LIGHT GAME PANT

SG267 FROM 38 TO 54

Anti tick active non quiet reinforced pants.

Front: Half-elasticated waistband/ Hand-rested pockets/ Cargo pockets/ Rip stop stretch knee reinforced.

Back: Stretch reinforcement at top of the trousers/ Preformed knees.

COMPONENTS

Outside 1: 70% Nylon - 30% Polyester
Outside 2: 96% Polyester - 4% spandex



SG267/022 - BISON



DRY WEATHER RANGE - SUMMER WEATHER



RANGE

CLASSIC COUNTRY



CLASSIC COUNTRY RANGE

WOODS JKT

SG243 FROM S TO 4XL

Country style padded winter jacket with removable fur collar. Soft, water-repellent fabric honeycombed or smooth depending on the colour.

Front: 3 chest pockets / 2 hand pockets under flap / Heavy top stitching at collar, shoulders and sleeves.

Back: Adjustable waist thanks to snapped tabb.

Inside: Fully Kilted and padded / 2 secure pockets.

COMPONENTS

Extérieur : 100% Polyester
Fourrure : 100% acrylique
Garnissage : Ouate 100% Polyester
Lining: 100% Polyester



SG243/041 - NAVY

ODUJ JKT

SG130 FROM S TO 4XL

Mid season quilted jkt

Fabric: DWR treatment / synthetic insulation / Polyester Knitted sleeves / Suede pocket flaps

Front: zipped pockets under flaps.

COMPONENTS

Extérieur : 100% Polyester
Lining: 100% Polyester
Garnissage : 100% Polyester



SG130/011 - TURKISH COFEE

BOSSY

SG101 FROM S TO 4XL

Country style jacket with nice details. Water repellent fabric, rectangular quilting.

Front: Flap front / 2 chest pockets / 2 hands pockets / Adjustable cuffs.

Iside: 2 secured pockets.

COMPONENTS

Extérieur : 100% Polyester
Garnissage : Ouate 100% Bio Polyester
Lining: 100% Polyester



SG101/041 - NAVY



CALMEL HOODIE

SG198 FROM S TO 4XL
Heavy hoodie sweater with soft sherpa inside

Front: Fix hood adjustable with strings / Full zip front opening / Shoulders & elbow reinforcement / Hands pockets.

COMPONENTS

Extérieur : 100% Polyester,
Reinforcements: 100% Polyester,
Lining: 100% Polyester.



SG198/023 - BLUE INDIGO



SG256/028 - BARK

SG256/055 - CYPRESS

CORVIER

SG256 FROM S TO 4XL
Heavy sweater with soft sherpa inside

Front: Full zip front opening / Collar / Shoulders & reinforcement with top stitching detail / Easy acces hands pockets.

COMPONENTS

Extérieur : 100% Polyester,
Reinforcements: 100% Polyester,
Lining: 100% Polyester.



WILD POLO

NEW

SG299 FROM S TO 4XL
Soft stretch polo shirt in small pique fabric. Casual straight cut, Three visible buttons at collar, heart signature .

COMPONENTS

Shell: 95% Coton - 5% Spandex



SG299/041 - NAVY



SG299/046 - PUMPKIN



SG299/043 - OLIVE

COUNTRY STRETCH PANT

SG273 FROM 38 TO 50
Fully stretch country pants with anti-tick treatment. Slim cut & comfortable thanks to soft lightly peached fabric.
Front: Half-elasticated waistband/ Hand-rested pockets/ Zipped pocket at right thigh/ Cargo pocket under flap/ Shaped knees.
Back: Fully stretch.

COMPONENTS

Extérieur : 100% Polyester,
Reinforcements: 100% Polyester
Lining: 100% Polyester



SG273/028 - BARK



CLASSIC COUNTRY RANGE

TWIN JKT

SG245 FROM S TO 4XL

Versatile reversible bi color spring jacket.
Soft peach fabric, collar, cuffs and bottom with
contrasted detail ribbed edges .

Front: Contrasted zips details at front and pockets /
2 handrest pockets

Reversible style.

COMPONENTS

Extérieur : 100% Polyester
Lining: 100% Polyester



SG245/041 - NAVY



SG200/034 - SAND

BOCERF JKT

SG200 FROM S TO 4XL

Light mid-season Saharan jacket style.
Soft and light poly-cotton fabric.

Front: Zipped front opening under flap /
4 patch pockets with gusset.

Inside: Adjustable waist with drawstring.

COMPONENTS

Shell: 97% Coton - 3% Spandex
Lining: 100% Polyester



FORCE JKT

SG288 FROM S TO 4XL

Light mid-season Saharan jacket style.
Soft and light poly-cotton heavy fabric.

Front: Zipped front opening under flap / 4 patch
pockets with gusset.

Fully lined

COMPONENTS

Shell: 97% Coton - 3% Spandex
Lining: 100% Polyester



SG288/010 - BRONZE



RANGE

WOMEN



LD PHOENIX JKT

NEW

SG302 FROM S TO 2XL

Multi-pocket versatile jacket that combines technicality and sophisticated look. You'll have a crush thanks to its soft, peach handfeel fabric not noisy and its feminine cut. The jacket is waterproof and will be perfect for small game hunting.

Fabric: Noiseless microfiber I waterproof & breathable 10000/10000/ fully seam taped.

Front: Thin retractable hood in collar/ Reinforced and contrasted shoulders/ zipped chest pocket under flap/ 2 zipped hands pockets/ 2 wide patched pockets with double opening / adjustable cuffs

Back: Midle back pleat which allow freedom of movement & Large carrier back Pocket

Inside: Taffetas Lining / secured pocket / comfortable lycra cuff.

COMPONENTS

Outside 1: 55% Polyester - 35% Coton - 10% Polyamide - Membrane TPU 10000 / 10000

Outside 2: 100% Polyester micro brush

Outside 3: 48% Polyester - 36% Nylon - 16% Spandex

Lining: 100% Polyester



SG302/022 - BISON



SG230/022 - BISON

LD PEISEY PANT

SG230 FROM 36 TO 46

Active hunting pant / fully seam taped

Fabric: Micro diamond slightly structured fabric / Noiseless / Waterproof , breathable, 5k/5k

Front: 2 hands pockets / Comfortable waistband with elastic at sides.

Inside: Polyester taffeta lining.

COMPONENTS

Shell: 55% Polyester - 35% Coton - 20% Polyamide / membrane 10000/10000

Lining: 100% Polyester



LD PEISEY JKT

SG229 FROM S TO 2XL

Veste femme ceinturée, membrannée, multi-poches. Laminated multi pocket ladies jkt

Fabric: Noiseless peach finish fabric / Waterproof & Breathable 8000/8000 / Fully seam sealed

Front: hood storage inside collar / thin taffetas hood / 2 high hand pockets / Removable belt / 2 patched pockets with gusset

Back: wide back pocket storage with one side opening.

COMPONENTS

Shell: 55% Polyester - 35% Coton - 20% Polyamide - Membrane 10000 / 10000

Lining: 100% Polyester



SG229/022 - BISON



LD PROLIGHT TRACK PANT

SG301 FROM 36 TO 46

Maximum comfort for these reinforced bi-stretch pants. Feminine & sporty cut, fitted legs and preformed knees, this model has 3 secure pockets.

Front: Half elasticated belt / Zipped hand rest pockets / Thigh zipped pocket / KVL lower leg reinforcement.

Back: 2 zipped pockets / preformed knees.

COMPONENTS

Outside 1: 92% Polyamide - 8% Elasthanne
 Outside 2: 92% Polyester - 8% Elasthanne
 Lining: 100% Polyester



SG301/010 - BRONZE



LD CATHY PANT

SG74 FROM 36 TO 42

Stretch hunting pant - Slim fit

Fabric : 4 way stretch / Double weave fabric for a great comfort.

Front: Zipped pockets in front / Comfortable waist with elastic at sides.

Back: Right side zipped pocket / Invisible bottom leg zipped opening.

COMPONENTS

Extérieur : 100% Polyester
 Lining: 100% Polyester



SG74/011 - TURKISH COFEE



RANGE ACCESORIES SOIRIES



CAPS

TRAKER CAP
SG277/012



Tracking cap made with strong fabrics

Outer shell: 100% Polyester

CAMO CAP
SG43/BC



REAL TREE® Camouflage cap / 3D logo

Outer shell: 100% Polyester

CAMO CAP
SG43/GC



REAL TREE® Camouflage cap / 3D logo

Outer shell: 100% Polyester

SNIDE CAP
SG311/010



Waterproof cap with Printed logo

Outer shell: 100% Polyester

PEISEY CAP
SG127/022



Suede fabric cap with 3D logo

Outer shell: 100% Polyester

PEISEY CAP
SG127/042



Suede fabric cap with 3D logo

Outer shell: 100% Polyester

PEISEY CAP
SG277/012



Suede fabric cap with 3D logo

Outer shell: 100% Polyester

KNIT CAP
SG213/022



Heather knitted cap / 3D logo

Outer shell: 100% Polyester

KNIT CAP
SG213/055



Heather knitted cap / 3D logo

Outer shell: 100% Polyester

STAG CAP
SG309/010



Knitted cap with multicolor thread 3D embroidered logo

Outer shell: 100% Polyester

STAG CAP
SG309/041



Knitted cap with multicolor thread 3D embroidered logo

Outer shell: 100% Polyester

SP GAME CAP
SG253/022



Woolen fabric cap with suede peak

Fabrics 1: 50% wool - 50% Polyester
Fabrics 2: 55% Polyester - 10% Nylon, 35% Coton

SP GAME CAP
SG253/055



Woolen fabric cap with suede peak

Fabrics 1: 50% wool - 50% Polyester
Fabrics 2: 55% Polyester - 10% Nylon, 35% Coton

WILD CAP
SG278/WDC



Trendy mesh Camouflage cap with logo

Outer shell: 100% Polyester micro brush

WILD CAP
SG278/012



Trendy mesh Camouflage cap with logo

Outer shell: 100% Polyester micro brush

MAC CAP
SG214/MC



Trendy Camoo cap

Outer shell: 100% Coton

ANTLER CAP
SG279/041



Mesh cap with embroidered deer patch

Outer shell: 100% Coton

ANTLER CAP
SG279/010



Mesh cap with embroidered deer patch

Outer shell: 100% Coton

GAME CAP
SG240/055



Country style cap with retractable polar fleece hear protection inside

Fabrics 1: 100% Polyester
Fabrics 2: 55% Polyester - 10% Nylon - 35% Coton
Inner: 50% laine - 50% Polyester

GAME CAP
SG240/022



Country style cap with retractable polar fleece hear protection inside

Fabrics 1: 100% Polyester
Fabrics 2: 55% Polyester - 10% Nylon - 35% Coton
Inner: 50% laine - 50% Polyester

GAME CAP
SG240/BC



Country style cap with retractable polar fleece hear protection inside

Fabrics 1: 100% Polyester
Fabrics 2: 55% Polyester - 10% Nylon - 35% Coton
Inner: 50% laine - 50% Polyester

TONIO BEANIE
SG135/012



Logoted reversible beanie/ Neon Orange outside side / kaki green inside

Outer shell: 100% Polyester

NECK

CAMOO NECK
SG87/BC



Multi purpose neck gaitor
Outer shell: 100% Polyester

CAMOO NECK
SG87/GC



Multi purpose neck gaitor
Outer shell: 100% Polyester

HUNTER SCARF
SG52/012



Unisex BLAZE logoted scarf
Outer shell: 100% Polyester

STORM SCARF
SG84/023



Blue check scarf
Outer shell: 100% Polyester

LUCHO SCARF
SG51/GREEN



woven checked man's scarf
Outer shell: 100% Polyester

DOLCE SCARF
SG223/MC



Military printed scarf
Outer shell: 100% Polyester

ZIG SCARF
SG225/023



Blue herringbone woven scarf
Outer shell: 100% Polyester

SOLOGNE SCARF
SG224/MC



Unisex military printed sarf
Outer shell: 100% Polyester

CAMO SCARF
SG54/MC

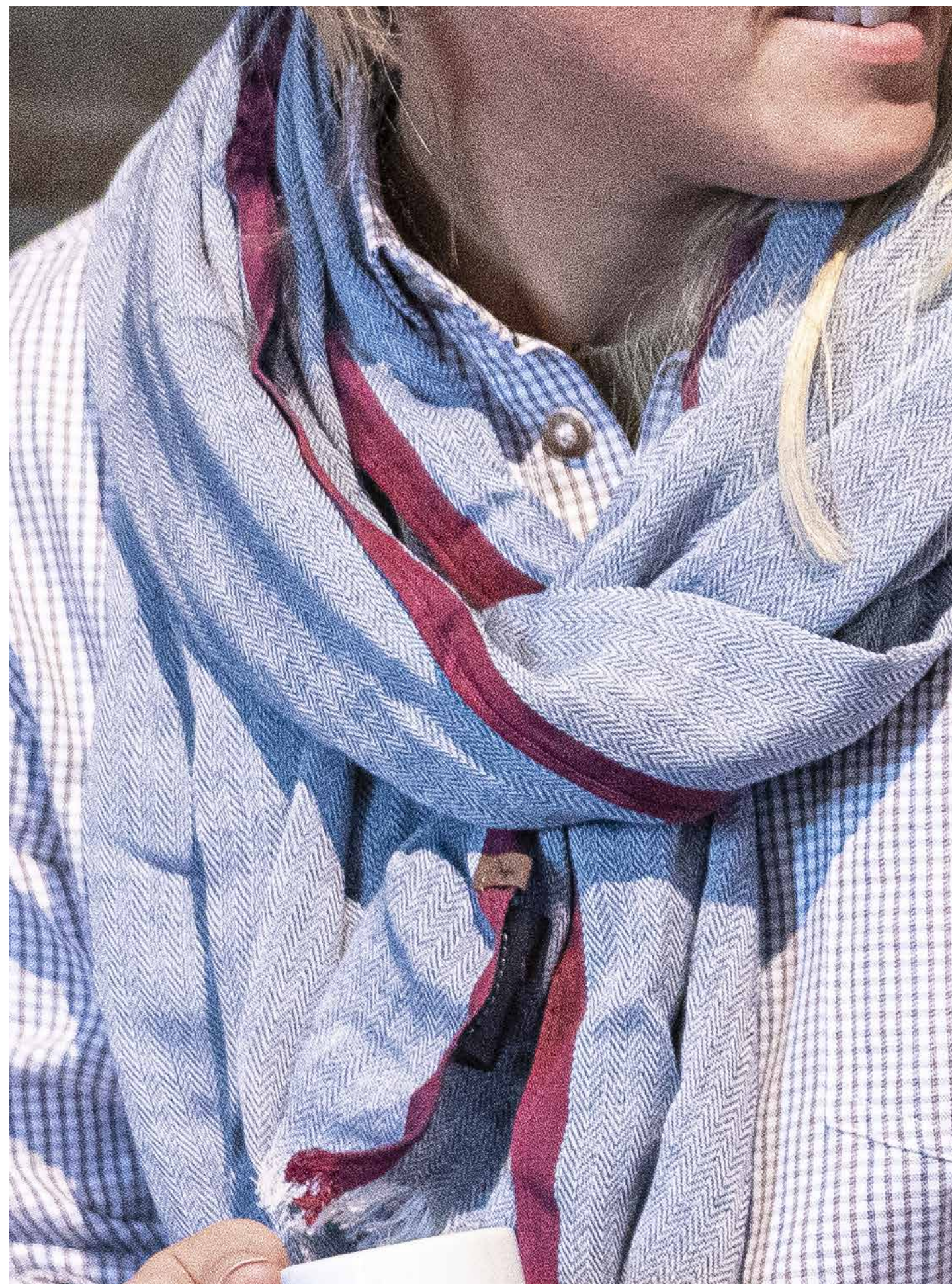


Unisex military printed sarf
Outer shell: 100% Polyester

JUSTEEN SCARF
SG53/MPC



Woman's scarcf military pink print
Outer shell: 100% Polyester



RANGE

SHOES



CHAUSSURES

IDA
SG008C/M FROM 38 TO 47



Hunting shoe dedicated to active all-terrain hunting, grained full grain leather, VIBRAM® micro sole, suede leather insert, waterproof and breathable SYMPATEX® membrane, ortholite anatomic insole for greater comfort, 360 degree stone guard, quick tightening and self-locking.

Full grain leather - VIBRAM® sole - Suede leather - SYMPATEX® - Promax - Ortholite

NEVIS
SG005C/M FROM 38 TO 47



Tracking shoe, suede leather, VIBRAM® sole, Cordura KRONOS lining, SYMPATEX® waterproof and breathable membrane, Ortholite insole, 360 degree stone guard.

Leather - Rubber sole - Cordura kronos - VIBRAM® - Ortholite

AIGUAL
SG001C/M FROM 38 TO 47



Full grain leather clog, full grain leather insole, rubber sole

Leather - Rubber sole

MERCANTOUR
SG0012C/M FROM 38 TO 47



Lightweight, ultra-comfortable all-terrain hunting boot suitable for all types of hunting and terrain, waterproof/breathable membrane, full grain leather, high-density VIBRAM® sole with 360° grip, reinforced yoke, SYMPATEX® membrane, ortholite anatomic insole for greater comfort, 360-degree stone guard, quick tightening

Full grain leather - VIBRAM® sole - suede - waterproof membrane / respi - Cordex - Armacord - Ortholite

OSSAU
SG0010C/M FROM 38 TO 47



Light and comfortable hunting shoe adapted to all types of hunting, waterproof/breathable membrane, with a mixture of suede leather and CORDURA, reinforced yoke and stone guard, to provide a very robust set, while keeping an incredible feeling of lightness thanks to an ultra-light sole with a powerful cramp on all the grounds, but also an anatomic ortholite insole which will adapt perfectly to your foot shape.

Suede leather - Cordura Mesh - Waterproof / breathable membrane - Ortholite - Dual density polyurethane sole

SIZES

SIZES EUR	38	39	40	41	42	43	44	45	46	47
SIZES US	6	6,5	7	8	8,5	9,5	10	11	11,5	12,5
SIZES UK	5	5,5	6,5	7,5	8	9	9,5	10,5	11	12



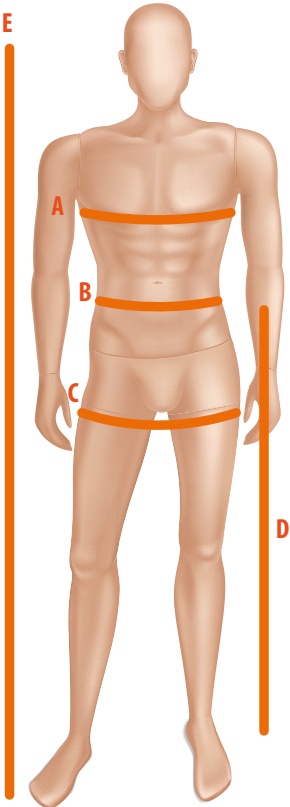
SIZES - VESTS

MEN	S	M	L	XL	2XL	3XL	4XL
A	92-98	102	106-110	110-116	116-122	122-130	130-138
B	76-84	84-88	88	92	96-100	104-108	116-122

E	168-174	174-180	180-184	184-188	188-192	192-196	196-200
---	---------	---------	---------	---------	---------	---------	---------

WOMEN	S	M	L	XL	2XL
A	94-102	102-106	106-110	110-116	116-122
B	70-76	74-80	80-84	84-88	88-92

E	156-158	158-160	160-164	164-178	178-182
---	---------	---------	---------	---------	---------



SIZES - PANTS

MEN	38	40	42	44	46	48	50	52	54
B	76-80	80-84	84-88	88-92	92-96	96-100	100-104	104-108	108-116
C	100	104	108	112	116	120	124	128	132

D	101	102,5	104	105,5	107	108,5	110	111,5	113
---	-----	-------	-----	-------	-----	-------	-----	-------	-----

WOMEN	38	40	42	44	46
B	70-76	74-80	80-84	84-88	88-92
C	98	102	106	110	114

D	101,5	103	104,5	106	107,5
---	-------	-----	-------	-----	-------

PRODUCT TECHNOLOGIES



Waterproof Membrane



10K Waterproof Membrane



5K Waterproof Membrane



20K Waterproof Membrane



Anti mosquitos



Anti ticks



Sealed seams



Very light weight
Lightweight and highly compressible



DWR Traitement - Durable water repellent
Water drops do not go through on the fabric thanks to a treatment



Wind blocker Membrane
Stops air and allows body to keep warmth



Breathable
Evacuate sweat



Stretch
Comfortable thanks to spandex



Synth  tic filing
A synthetic down alternative with a High thermic power



R  versible
Garment can be worn upside down









a brand of

Rivolier
DEPUIS 1830

